

ILB-3020-CW

LED COLD-WEATHER EMERGENCY BATTERY PACK

OPTIONS

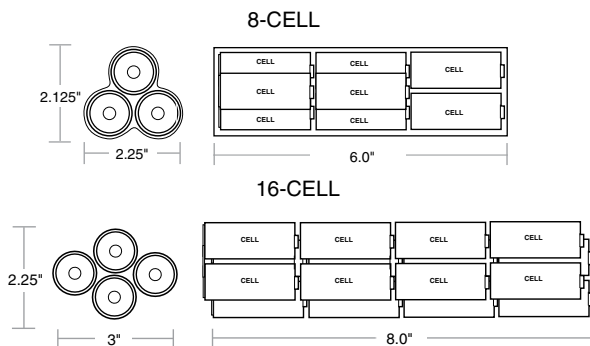
TEST KIT CONFIGURATION

- TBTS (STANDARD)
- TWO-PIECE TEST SWITCH AND CHARGE INDICATOR

BATTERY CONFIGURATION

- D** - DUAL BATTERY PACKS (TWO 8-CELL)
- S** - SINGLE BATTERY PACK (ONE 16-CELL)

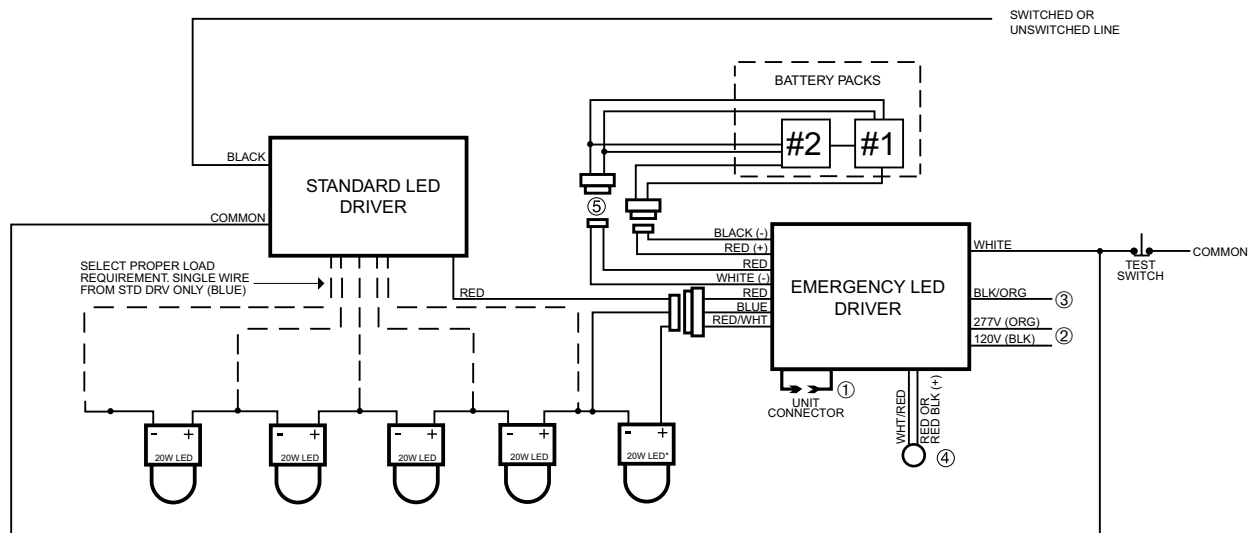
BATTERY DIMENSIONS



ILB-3020-CW SAMPLE SPECIFICATION

Emergency lighting shall be provided by using a standard LED fixture equipped with an **ILB-3020-CW** LED emergency battery pack. The **ILB-3020-CW** shall consist of (1) or (2) high temperature, maintenance-free nickel cadmium battery packs, and a 9.5" x 2.0" x 1.0" vandal-resistant galvanized steel case containing a charger board and an electronic circuit. The unit is designed for installation within the fixture or ballast compartment. A test switch and charge indicator accessory kit shall be included. The LED emergency battery pack shall operate an LED load of up to 23W at a rated current output of 750mA for a minimum of 90 minutes in the emergency mode. The **ILB-3020-CW** shall have 5.5 watts of input power and a battery capacity of 24 watt hours. The **ILB-3020-CW** is a UL Recognized Component and meets or exceeds all NEC and Life Safety Code Emergency Lighting Requirements. The **ILB-3020-CW** is warranted for a full five (5) years from the date of purchase.

ILB-3020-CW WIRING DIAGRAM



- ① DO NOT MATE CONNECTOR UNTIL INSTALLATION IS COMPLETE AND AC POWER IS SUPPLIED.
- ② SELECT PROPER VOLTAGE LEAD. CAP UNUSED LEAD.
- ③ BLK/ORG LEAD FOR COLD-WEATHER UNIT ONLY. FOR NON-COLD WEATHER UNITS, CAP BLK/ORG LEAD. FOR COLD-WEATHER UNIT 120V INSTALLATION, CONNECT BLK/ORG TO BLK. FOR COLD-WEATHER UNIT 277V INSTALLATION, CAP BLK/ORG.
- ④ TEST ACCESSORY LEADS-OBSERVE PROPER POLARITY WIRING.
- ⑤ OPTIONAL CONNECTOR FOR COLD-WEATHER HEATING BLANKET ONLY.